

# MODEL 8800

# EVOLUTION 2

## THE STARS HAVE ALIGNED



\*When installed on vehicles at gross weight with headlights at 0.8–1.2m off the ground.

### Unmatched safety and performance

J.W. Speaker Corporation is launching the industry's FIRST 4" x 6" LED headlight that meets proposed National Highway Transportation Safety Administration (NHTSA) guidelines for a 5-Star NCAP-compliant low beam headlight. This new product, called the Model 8800 Evolution 2, includes both heated and non-heated versions featuring improved sealing, superior condensation management and a wider operating voltage, supporting DOT, ECE and military standards.



**J.W. SPEAKER**  
Engineered. Lighting. Solutions.

# MODEL 8800 EVOLUTION 2 LED HEADLIGHT

J.W. Speaker has leveraged its ground-breaking solid optics technology to provide the means to upgrade a truck's forward lighting package to achieve NHTSA proposed 5-Star automotive lighting performance levels\*. **Conventional reflector optics are NOT capable of meeting this standard.**

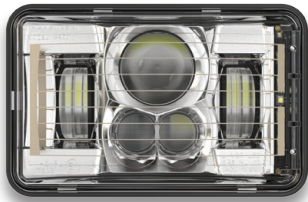
Heated versions feature a thermally conductive grid system to de-ice lenses up to twice as fast as competitor's lights. This proprietary, best-in-class system reacts to temperature changes on a real-time basis with no action required by the driver.

J.W. Speaker's headlight now addresses the need for effective and speedy de-icing to support around-the-clock operation.

**All Model 8800 Evolution 2 LED headlights comply with:**  
FMVSS 108 Table XIX, IEC IP69K, Buy America Standards



\*When installed on vehicles at gross weight with headlights at 0.8–1.2m off the ground.



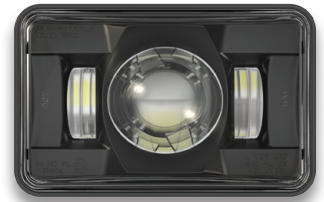
Low beam heated version  
with chrome bezel



Low beam non-heated  
version with black bezel



High beam heated version  
with chrome bezel



High beam non-heated  
version with black bezel

## Heated Versions

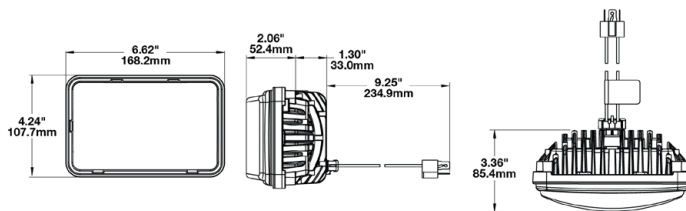
12-24V DC Input; DOT-compliant

Part No.	Description
0551781	LED High Beam Headlight with Chrome Bezel
0552671	LED High Beam Headlight with Black Bezel
0551771	LED Low Beam Headlight with Chrome Bezel
0552651	LED Low Beam Headlight with Black Bezel

## Non-Heated Versions

12-24V DC Input; DOT-compliant

Part No.	Description
0551381	LED High Beam Headlight with Chrome Bezel
0552571	LED High Beam Headlight with Black Bezel
0551371	LED Low Beam Headlight with Chrome Bezel
0552551	LED Low Beam Headlight with Black Bezel



# MS FOSTER

SERVING THE TRANSPORTATION INDUSTRY

1040 Highway 212  
Michigan City, IN 46360

OFFICE 219.879.9225  
TOLL FREE 888.452.4053  
FAX 219.879.9313

sales@msfoster.com  
www.msfoster.com